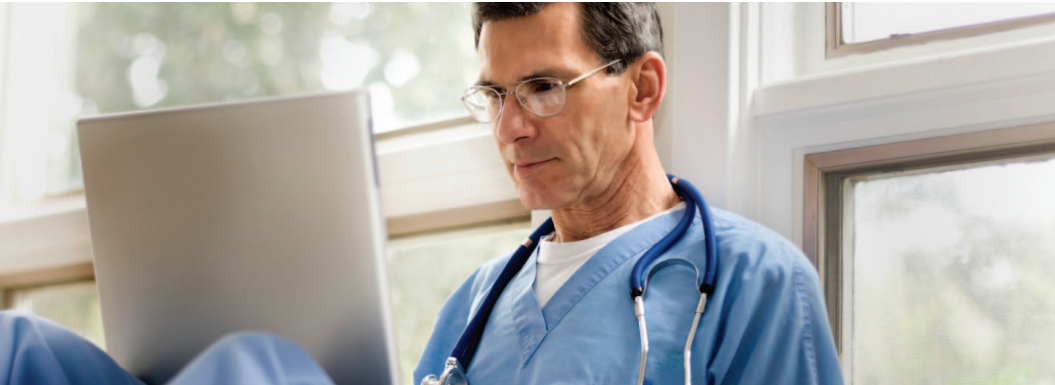


Picis eView for Critical Care Manager

Convenient web-based access to results away from the bedside

Picis is a part of **OptumInsight**



For intensivists and clinicians responsible for the care of critically ill patients, **Picis eView for Critical Care Manager™** provides an intuitive way to view key data to help support decisions. eView, part of the Picis family of high-acuity solutions, summarizes important information on a population of patients admitted to the critical care department.

With the voluminous amounts of patient data being generated hour by hour in the ICU, busy clinicians are not always in close proximity to the patient's bedside to access vital sign trends or lab results that help support the course of clinical care. eView uses web-based technology to provide improved accessibility and extended availability of patient information to intensivists and clinicians beyond the bedside to help them more efficiently provide quality care to a greater number of patients.

Concise information helps support informed and timely clinical decisions

Physicians often want a consolidated view of their patients' pertinent data to help enable rapid identification of patients requiring immediate attention. Whether clinicians are in the office, physician's lounge or preparing for rounds, eView provides them with the information they need, when and where they need it.

The linear view presents clinicians with well-organized information on patient demographics, new lab results and the latest physiologic discrete and trended values for a selected group of patients. Information can be filtered by location or by selecting a customized group of patients the clinician wishes to view.

Key features

- Easy-to-deploy server-based, thin client technology
- Cross-browser compatibility
- Configurable threshold settings displayed discretely and in a trend
- Automatic refresh of views
- Aggregated view of a population of patients admitted to one or more ICU departments
- Notification of new lab results or lab results with "out of range" value(s)
- Personalized lists of selected patients (My Selected Patients)
- View of all beds in a particular ICU department
- Detailed patient summary accessed with a single click
- Print view of patient summary
- Integrated with existing Picis Perioperative and Critical Care Suite security

Bed	Patient Name	Diagnosis	Length of Stay	BP-S	BP-D	HR	Temp	Resp	SpO2	O2 Amt	O2 Mode
✓ 001	Pantour, Patricia Female - 71 years - 62.0 kg	Total Traumatic Cataract	3 Days	188	95	49	36.7	21	95%	0.3	NC
✓ 002	Marin, Mall Female - 39 years - 76.0 kg	Pulmonary Insufficiency Following Trauma and Surgery	2 Days	124	68	45	36.3	14	98%	0.3	NC
✓ 003	Colwell, Melanie Female - 59 years - 58.0 kg	Traumatic Pneumothorax and Hemothorax	1 Day 13:42	188	96	45	36.3	21	95%	0.3	NC
✓ 004	Whalen, Trevor M Male - 18 years - 92.0 kg	Secondary and Recurrent Hemorrhage as an Early Complication of Trauma	2 Days	121	65	70	36.7	12	99%	0.5	IMV
✓ 005	Camps, Montse Male - 40 years - 113.4 kg	Esophageal Varices with Bleeding	1 Day 12:09	116	73	65	36.6	19	99%	0.05	SBIV
✓ 058	Miller, Kayla Female - 53 years - 71.2 kg	Traumatic Amputation of Arm and Hand (Complete) (Partial) Unilateral Below Elbow without Complication	4 Days	124	68	45	36.3	14	98%	0.3	NC
✓ 059	James, Hevin Male - 44 years - 84.5 kg	Pulmonary Insufficiency Following Trauma and Surgery	2 Days	135	73	49	36.6	17	94%	0.7	SBIV
✓ CP2	Scores, Tessie Female - 19 years - 67.0 kg	Traumatic Shock	3 Days	148	73	90	36.1	19	99%	0.7	AC
✓ GF	Stife, Gregory Male - 13 years - 80.0 kg	Accident Caused by Handgun	1 Day 21:23	188	96	45	36.3	21	95%	0.3	NC

eView provides ICU clinicians with convenient, web-based access to results away from the bedside in a consolidated view or a personalized list showing patients under their care.

Visual indicators and thresholds increase awareness of patient status

eView provides numeric and trended views of significant physiologic data gathered by Critical Care Manager from patient monitoring devices, including color-highlighted high and low thresholds that are clinician-configurable by age group. The latest values for each field are displayed and automatically refreshed at configurable intervals. From the linear patient list, clinicians can easily view the last six saved entries for any physiologic variable displayed, along with the date and local time for each value, to make it easier to help them assess treatments and medications.

As new lab results become available from Critical Care Manager, clinicians are notified with a visual indicator that changes color when at least one result is outside of the clinician defined normal range. The indicator also provides access to the actual lab results and enables authorized users to indicate that the results were reviewed.

Personalized patient list helps clinicians be more productive

For busy physicians between cases or rounds, eView includes the capability to create a personalized patient list. Patients can be selected from a single ICU department or across other critical care departments containing patients under their care. This customized view saves time by helping physicians quickly evaluate their patients' information.

Detailed patient summary organizes important chart details

When more detailed information about a specific patient is needed, clinicians can simply select a patient from their list and then drill down to view a comprehensive summary. This view helps support decisions by presenting a graphical display of data organized by body systems. With the patient summary, clinicians gain access to patient chart information without having to sort through large volumes of collected data, such as:

- Allergy information
- Fluid balance
- Vital signs
- Lab results
- Active medications

This view helps improve clinician communication and caregiver productivity.

The screenshot displays the CareSuite eView for Critical Care Manager interface for Picis Hospital. The patient is identified as Collins, Melanie (003), with Patient ID 937555. Her age is 21 years, gender is Female, weight is 84.0 kg, height is 180.0 cm, and BMI is 24.9. The interface is divided into several sections:

- Allergies:** Medical: Codeine, Folic Acid; Other: Corn.
- Diagnoses:** 376.52, Enophthalmos Due to Trauma or Surgery (9/22 11:40 AM); 716.1, Traumatic Arthropathy (9/22 11:40 AM); 780.7, MALISE AND FATIGUE (9/17 8:13 PM); M76.6, Achilles tendinitis (9/17 6:13 PM).
- Fluid Balance:** A table showing In (I/I), Out (O/U), and Net (N/E) for Current Shift, Previous Shift, Current Day, Previous Day, and Admission.
- Physiologic Data:** A table with columns for Collected, HR, BP-S, BP-D, Temp, Resp, SpO2, O2 Amt, and O2 Mode, showing data points from 9/24 4:05:20 PM to 9/24 4:12:20 PM.
- Lab Results (last 72 hours):** A table with columns for Collected, Lab Type, Value, Range, Acknowledged by, and Acknowledged, listing various lab tests such as Digoxin level, White cells, Total CO2, Glucose, Creatinine, and Sodium.

The Patient Summary offers clinicians an expanded and detailed view of important chart details.

Secure web-based access available anytime, anywhere

eView provides intensivists with the convenience of web-based remote access to key ICU data for patients under their care. Picis recommends that the eView web/application server be deployed behind the institution's firewall and accessed using a virtual private network (VPN) connection.

Picis, a subsidiary of OptumInsight—part of Optum, a leading health services business, is a global provider of innovative information solutions that enable rapid and sustained delivery of clinical documentation, financial and operational results in the emergency departments, surgical suites and intensive care units of the hospital. Picis offers the most advanced suite of integrated products focused on these life-critical areas of the hospital where the patients are the most vulnerable, the care process is the most complex and an increasing majority of hospital costs and potential revenue are concentrated. Headquartered in Wakefield, Massachusetts, Picis has licensed systems for use at more than 2000 hospitals in 19 countries.

For more information about Picis, visit www.picis.com



T 781 557 3000 | www.picis.com

100 Quannapowitt Parkway, Suite 405, Wakefield, MA 01880

© Picis, Inc. All rights reserved. "Picis", the Picis logo and eView for Critical Care Manager are either registered trademarks or trademarks of Picis, Inc. in the United States and/or other countries. Microsoft, SQL Server and Windows Server are either registered trademarks or trademarks of Microsoft Corporation in the United States and/or other countries. All other trademarks mentioned herein are the properties of their respective owners. This product sheet represents information for the North American market only.

COL eView for Critical Care Product Sheet 11232011

